

RMIT GRADUATE RESEARCH CONFERENCE EXHIBITION

June 1 - June 5

Tandem
Simon Venturi
Rutger Pasma
Viet Tuan Pham
Rebecca Gully

REBECCA GULLY

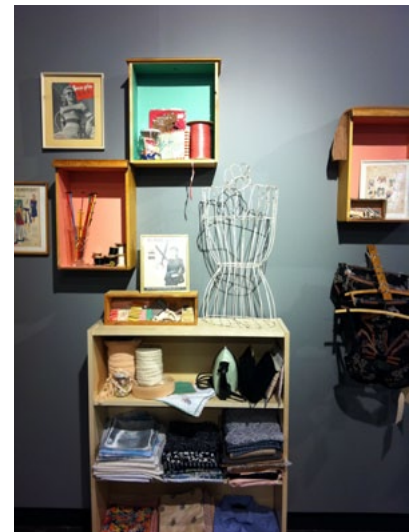
MATERIAL MEMORIALISATION - NEW NARRATIVES FROM OLD

Rebecca's project work blurs the distinction between the past and the present. She references garments from the mid-twentieth century and 'Make Do and Mend' strategies for preservation, conservation, recycling and economy of materials. Working with previously worn and used garments, cloth and trim forms part of a narrative. The story has already begun, even before the hand of the designer continues to tell tales of our

time - so that the associative memory of the maker, viewer or wearer of the garment weaves complex narratives based on personal and inherited social memory.

Rebecca's Master of Arts project demonstrates how nostalgia can be used as a tool for practice-based research. Vintage garments and ways of making inform her work, and in borrowing from the past she find new ways of doing things.

This project is an exploration of fashion design genealogy through both antecedents and future trajectories - resulting in a model for a sustainable artisanal design studio.



RMIT GRADUATE RESEARCH CONFERENCE EXHIBITION

June 1 - June 5

Tandem

Simon Venturi

Rutger Pasma

Viet Tuan Pham

Rebecca Gully

RUTGER PASMAN

If we search for new developments and new densities in Metropolitan Melbourne we need to alter our views of what Metropolitan Melbourne actually represents.

A series of projects are presented that search for other ways of looking at centrality within the urban field. They use a variety of scales, from regional to local, to suggest an existing connection to the context of past, present and possible future developments within the middle ground of Metropolitan Melbourne.

The drawings presented offer such an opportunity for seeing a potential.



RMIT GRADUATE RESEARCH CONFERENCE EXHIBITION

June 1 - June 5

Tandem

Simon Venturi

Rutger Pasman

Viet Tuan Pham

Rebecca Gully

SIMON VENTURI SHARED INFRASTRUCTURE

Simon's work explores the existence and potential of a type of shared infrastructure, through a series of architectural projects, within the peripheral, suburban and inner city urban condition. The culmination of this exploration, the Community Corridor Landscapes project, develops and tests strategies encouraging shared use of infrastructure within the Dandenong Valley through an understanding of the social, economic, political and geographical forces shaping this landscape and its surrounding

communities. Community participation and ownership is a goal shared by almost all government departments and planning policies but often implemented in limited and ineffectual ways through existing land management systems.

This project develops a series of strategies, establishing a network of permeable pathways allowing the physical reconnection of surrounding communities to the landscape. In turn, encouraging further cultural connections and allowing community use in exchange for assuming the associated responsibility regarding its maintenance and management.



RMIT GRADUATE RESEARCH CONFERENCE EXHIBITION

June 1 - June 5

Tandem
Simon Venturi
Rutger Pasman
Viet Tuan Pham
Rebecca Gully

VIET TUAN PHAM

RESISTANCE THROUGH TRANSFORMATION - A TRANSITIONAL
APPROACH FOR SUSTAINABLE PERI-URBAN ENVIRONMENTS

The urban boundary and peri-urban zones in Hanoi and Melbourne are constantly redefined and changed responding to urbanisation and industrialisation processes. The research has explored and developed a number of strategies formulating the "Transitional Approach", which takes into account the processes of changes over time spatially and programmatically in peri-urban environments.

By speculating on possible future changes, it chooses to strategically intervene before developments take place, in order to maintain agricultural production and supportive infrastructures as well as proposing new models of public spaces for peri-urban communities.

